



eBook

# Using Data and Analytics to Boost Learning

This eBook describes how the various reporting functionalities – such as 360° Reports, Standard and Advanced Reporting modules – support managers, teachers and students.

# Contents

## Using Data and Analytics to Boost Learning

<b>How Data and Analytics are Implemented in itslearning</b>	<b>3</b>
<b>Standard Reporting in itslearning</b>	<b>4</b>
Standard Reporting in itslearning for Teachers	4
User Example: Course Analytics for Teachers	5
Helpful Standard Reports for Students	6
Standard Reporting for System Administrators	7
<b>Advanced Reporting in itslearning (powered by Tableau)</b>	<b>8</b>
The itslearning Data Warehouse	9
Advanced Course Elements Report for System Administrators	10
Helpful “Ready-to-Go” Advanced Reports for Management	11
<b>List of Available Standard &amp; Advanced Reports</b>	<b>12</b>
<b>Learning Analytics: Customized Reports</b>	<b>14</b>
<b>About itslearning</b>	<b>15</b>

# Implementation of Data and Analytics within itslearning

The itslearning Standard, Advanced and Custom Reports help university administration, teachers and students use their data to the fullest potential, allowing for more informed decision-making. These reporting tools provide valuable insights into learning environment usage, user engagement, student progress, learning objective achievement, predictive analytics and much more. The itslearning reports are flexible, interoperable and customizable to the needs of all levels of an organization, allowing you to apply your understanding of the data to your specific priorities and practices. Our hierarchy system allows institutions to manage and control access of the various reports. Here's a breakdown of the different types of reports offered within itslearning:

## Standard Reports

Standard Reports are automatically embedded within all itslearning accounts. This includes reports on storage, logins and course visits for administrators, 360° reports in courses for teachers and students, and specific reports in some of our core tools.

## Advanced Reports

With Advanced Reporting, our built-in learning analytics delve deeper into your data — allowing system admins and university leaders to access details on user engagement, curriculum management, student progress, etc. With Advanced Reporting, universities are given instant access to a wide selection of “Ready-to-Go reports” as well as the capability to produce Custom Advanced Reports.

## Custom Advanced Reports

If you want to see your data in a different way than what's offered within the itslearning Advanced Reporting tools, our data consultants will work together with your university to develop customized reports aligned to your exact needs. Anything is possible.



# Standard Reporting in itslearning for Teachers

For all customers, a set of “Standard Reports” comes automatically with the use of itslearning. Here are some examples of our most-used Standard Reports:

## 360° reports

Allow teachers to quickly compare the progress of all students in the course

## Gradebook

Set up custom assessment scales, bring in scores and give extra credit or exemptions where needed

## Test Reports

Overview of test statistics & question analysis

## Learning Objectives Alignment Report

A tool for the teacher to see if they cover the entire curriculum.

## Learning Objectives Progress Report

See example →



“Unless a student comes to me on their own, I have no way of knowing that they’re struggling with the material until their exam results come in. How can I keep track of those students’ progress when I have hundreds of students in my course?”

### User Example: Jenny, Professor in Economics

Learning-objectives progress report - CS.L7.1.7

[Back to Learning objectives](#)

Assessment

**Status summary**

Does not meet: 0 Partially meets: 2 Mostly meets: 1 Meets: 1 Not assessed: 1

+ Add personalised task Filter by: Group Status Sort by: Name

<input type="checkbox"/>	Find participant	STATUS	PERSONALISED TASKS
<input type="checkbox"/>	Laura Santos	Not assessed	0
<input type="checkbox"/>	Emily Sampson	Mostly meets	1
<input type="checkbox"/>	Hui Yan	Meets	0
<input type="checkbox"/>	Joseph Pirotta	Partially meets	1
<input type="checkbox"/>	Marcell Zammit	Partially meets	0

1 to 5 of 5 View 100

Jenny checks the **Learning Objectives Progress Report** to see which students are meeting objectives and which are struggling to do so. For her, intervention starts here.

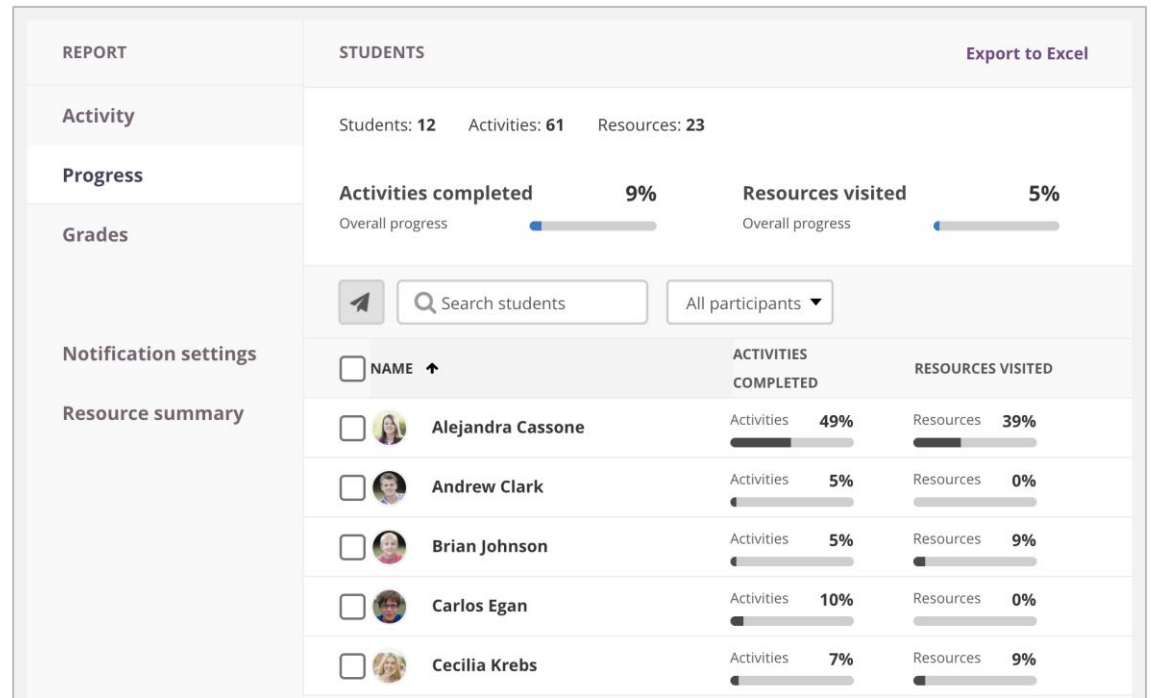
With this report, teachers can monitor overall progress toward learning objectives – filtering by individual, assessment or specific learning objective. After identifying students that are not mastering the objective, teachers can use the itslearning Recommendation Engine to assign personalized tasks as well as surveys or practice tests to give those students additional help before the exam.



# Course Analytics for Teachers

Under the 'Status and Follow-Up' tab, Jenny has access to several helpful reports.

By going into the **360 Reports - Progress Report**, she gets an overview of her students' progress in a particular course or group— including their activity level, how many tasks they've completed and if they are currently working on those tasks that soon have a deadline. If she sees that a student has not begun working on a task, she can send a message as a reminder or additional resources as needed.





“For me it is very important to keep track of my progress in my courses and be able to see the activities I need to work on with their deadlines.”

## User Example: Ken, Computer Science student

# Helpful Standard Reports for Students

Ken can see his own Activities, Progress and Grades by using the 360° reports. This feature allows students to see the learning elements within their courses. In this case, Ken can use this report to get an overview of the elements (such as resources and activities), which ones are mandatory, and whether he has read, participated, completed and been assessed on each individual element.

**Tip:** Making these reports available for students helps build trust in their progress and their teachers.

See example →

360° reports -

Activity Progress Grades

Overall progress

ACTIVITIES	18	RESOURCES	23
Overall progress	27%	Overall progress	56%
Completed on time	5	Visited	13
Completed past deadline	0	Not visited	10
Incomplete past deadline	6	Not active	0

Activities to be completed:

Open / Not visited	7
Not active	0

Course elements

Type: All Status: All Show: All

ELEMENT	STATUS	LAST VISIT DATE	TIME ONLINE	DETAILS
Extra work				
Laboratory Safety Video	Not visited	-	00:00:00	
Zammit, Marcell				
Q1: UNIT 01 What is Science?				
Lab: Preparing a Wet Mount Slide	Not completed	19 Jun 2017	00:00:00	Mandatory: Yes Deadline: 21 Mar 2017
CK-12: Lesson 1.1 The definition of Biology	Visited	07 May 2017	00:00:00	
PCK-12 Lesson 1.2 Principles of Biology	Not visited	-	00:00:00	
PCK-12 Lesson 1.3 Characteristics of Life	Visited	05 May 2017	00:00:00	
CK-12 Lesson 1.4 Organization of Living	Visited	23 Sep 2016	00:00:00	



“How can we get an overview of the student engagement in the platform?”

User Example: Robert, ICT Coordinator

## Standard Reporting in itslearning for System Administrators

Below are some examples of “Ready-to-Go” Reports that are currently in use for higher education:

### Storage distribution report

Shows how much storage is used (measured in MB). Select between Site and Organization Level Reports.

### Course visits report

Hourly course visits, split between type of profile and / or by weekday. Useful for seeing course enrolment and activity.

### Login and Session Details report

See example →



Robert checks the Standard **Login and Session Details report** to see the number of logins and gives a good overview of active vs. inactive users. Filters are available by organization, dates, and type of user (student, lecturer, administrators, etc.).

# Advanced reporting in itslearning

For customers who would like to delve deeper into their data, itslearning offers Advanced Reporting. After opting in, users are given access to a host of “Ready-to-Go” Reports which cater to the needs of all audiences. This feature is provided to system administrators.

The screenshot displays the 'Advanced Reporting' interface. At the top left, there is a 'Back to Administration' link. The dashboard is organized into a grid of report thumbnails, each with a title and a small preview image:

- Learning objectives alignment report**: Shows a complex data visualization with multiple colored bars and lines.
- User statistics**: Features two stacked area charts showing trends over time.
- Individual user login activity**: Displays a table with columns for user details and login information.
- User course visits**: Includes a bar chart and a line graph showing visit frequency.
- Gradebook**: Shows a grid-like structure for tracking student grades across different courses.
- Course Visits**: Contains a bar chart with multiple series representing different courses.
- Elements report**: Features a donut chart and a bar chart showing the distribution of elements.
- Learning objectives progress report**: Shows a bar chart with multiple series representing progress levels.
- User Logins**: Includes a large area chart and a smaller bar chart showing login patterns.

powered by  + a b | e a u



# The itslearning Data Warehouse

The itslearning data warehouse API is based on the **OData** industry standard, ensuring that any leading analytics software program can access the data contained in the itslearning warehouse.

With API access, organizations can collect data generated by users in itslearning and combine it with data collected in other systems for advanced analysis and decision-making possibilities. The customer owns all the data inside itslearning, whether they choose to analyze it directly inside itslearning with Tableau powered reports and statistics, and/or export the data into their chosen solution using the API.

The back-end of the data warehouse is driven by market-leading software company, Tableau, which specializes in data visualization and business intelligence. This relationship gives our customers access to the most cutting-edge and powerful reporting suite available directly inside itslearning.

Customers can generate and analyze their data in **three** ways:

## “Ready-to-Go” Reports

Analyze statistics and data directly inside itslearning. These reports and data can be exported in a variety of methods for further analysis, visualization or presentation.

## Customized Reports

Connect directly into the itslearning data warehouse with your own analytics software and get support with building reports tailored to your needs.

## Using external analytics software

Fetch itslearning data via the Data Warehouse APIs. This is suited if for those who want to combine itslearning data with data from other systems.



# Advanced Course Elements Report for System Administrators

Robert checks the **Advanced Course Elements Report** to see which element types are used. This is a great tool to assess how mature the use of the platform is (see the value of the investment) and to see the opportunities that exist using data. System administrators can see how teachers interact with their students (using tests, assignments, etc.) as part of their teaching. This is helpful for Robert to understand how a learning platform is much more than a cloud to host files in.

Other examples of advanced reports for System Administrators are:

## Advanced Hourly Course Visit Report

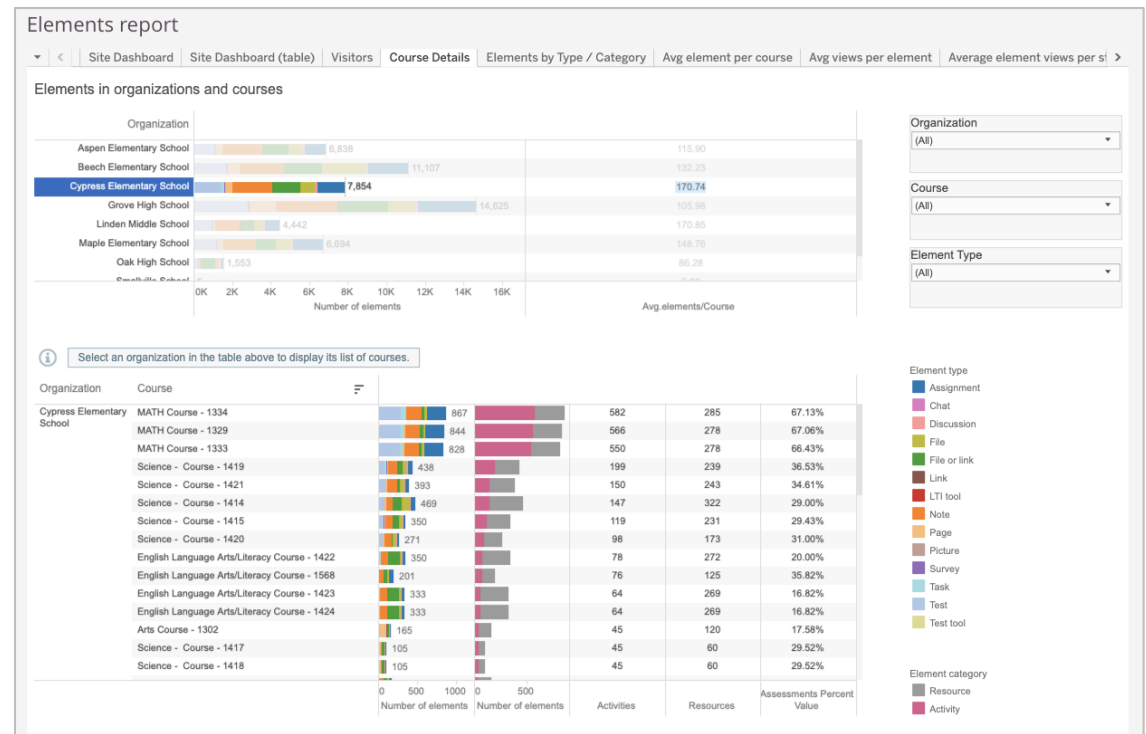
Measures the number of unique visitors to a course hour by hour, giving an overview of total usage within courses.

## Advanced User Statistics Report

Number of active, inactive and "In Trash" accounts over time to monitor user adoption.

## Advanced Learning Objectives Alignment Report

Identifies if learning objectives are being met and/or to find gaps where objectives are not sufficiently represented in curriculum.



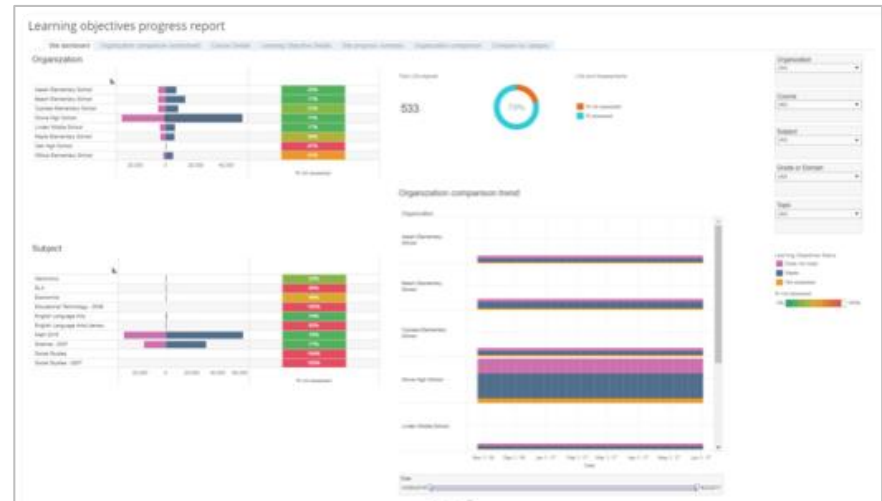
powered by  + a b l e a u

## Helpful “Ready-to-Go” Advanced Reports for Management

Within Advanced Reporting, there are a variety of statistics, reports and analytics available for administrators and management to assess the overall progress of the institution, keep track of student engagement and the potential fluctuation in dropouts, and whether learning objectives are being met.



**User Example:**  
Marie, Head of Faculty



In the Advanced Reporting tool, Marie has access to the Learning Objectives Progress Reports, where she can compare progress by subject, faculty or course. She can gauge how her Faculty is doing in comparison with the rest of the university. (top)

The Login and Session Details Report gives Marie an overview of who is logging in and when. By clicking on the different tabs at the top, she can filter by faculty to analyze the usage of staff and students in her own faculty. (bottom)

# Available Standard & Advanced (“Ready-to-Go”) Reports

Below, you will find examples of the reports available within itslearning today. Some are standard, while others require the customer to opt-in to Advanced Reporting. Please note that the number of available reports continues to grow as we further align ourselves with our customers’ needs:

## Storage Distribution Report

Shows how much storage is used (measured in MB). Select between Site and Organization Level Reports.

## Advanced Login Report

Logins over time and by site profile, day and time. Filters available to view and compare data from selected dates and sub-organizations.

## Course Visit Report

Hourly course visits, split between type of profile and / or by weekday. Useful for seeing course enrolment and activity.

## Login Report

Number of logins and gives a good overview of active vs. inactive users. Filters available by organization, dates, and type of user (student, lecturer, administrators, etc.).

## Advanced Hourly Course Visit Report

Provides teachers and administrators with a more specific overview of usage via activity specifically in courses. The key measure here is the number of unique visitors to a course each hour. You can filter this report by course and time (range of dates).

## Advanced Course Elements Report

This report allows you to see if the organization is using itslearning in a basic way (as a file repository) or moving towards advanced use. It reflects whether the interactive learning tools are being used more often.



continued... →



## Available Standard & Advanced (“Ready-to-Go”) Reports (continued)

### **Advanced Learning Objectives Alignment Report**

Identifies if learning objectives are being met, and/or to find gaps where learning objectives are not sufficiently represented in the curriculum. The report shows comparisons of learning objective alignment to courses, plans, and course elements, distinguishing assessments and learning objective assessment. Data can be filtered to compare organizations, courses, or learning objectives.

### **Learning Objectives Progress Report**

Monitors progress toward learning objectives by learning objective, individual participant or by assessment. Drill down to the students not mastering and use the Recommendation Engine to assign personalized tasks for those students needing additional help and specific interventions.

### **Advanced Learning Objectives Progress Report**

Insight into student progress, tailored to those customers that use the learning objectives assessment options in itslearning. The report is of great value for customers with standards-based assessment.

### **Advanced User Statistics Report**

Number of active, inactive, never active and “In Trash” accounts have been changing over time is important to monitoring user adoption. View trends and counts of user accounts that have been active, inactive during a selected time, or have never logged in.

### **Gradebook**

Set up custom assessment scales or category weightings. Bring in scores from Test, Assignments and Custom Activities. Give extra credit or exemptions as needed.

### **Assignment Report**

Overview of assignments in the course with student status views and assessment completion views. A teacher can filter by group and sort by title or due date for any assignment or assessment.

### **Test Reports**

Access an overview of test statistics as well as a question-by-question item analysis.

### **Progress Report**

How students have completed mandatory course tasks and set up specific completion criteria for the course.

### **Survey Reports**

Results of survey by participant or aggregated by group. Results can be exported to Excel.

### **Attendance Report**

Number of absent days and any self-registered absence.

## Learning Analytics: Customized Reports

In addition to the reports mentioned, itslearning offers universities the unique opportunity to dive further into the usage of the platform, giving access to the full data warehouse. This means that universities can tailor-make reports to meet their own individual needs.

itslearning offers a truly unique opportunity to take full advantage of all organizational data, by developing custom reports – which can be accessed by either the built-in Tableau system, or through integrating with your own third-party analytics software.





# Explore the full potential of itslearning today

With tools to make every part of the data analysis process more effective and a support team excited to help you, getting started has never been easier.

GET STARTED >

Use itslearning Advanced reporting and see tangible results that help monitor students progress and more.

itslearning is Europe's largest provider of learning management systems for schools and universities. Built specifically for teaching, itslearning is today used by millions of people around the world. The company is headquartered in Bergen, Norway, with offices in 8 countries. Since 2019, itslearning has been part of the Sanoma Group.

As your eLearning partner, we can help you get a holistic overview of student learning with data sent directly to your reports generator and student information systems.

To learn more about itslearning visit [itslearning.com](https://itslearning.com)

